



**PAGES 2025**

7th OPEN SCIENCE MEETING  
5th YOUNG SCIENTISTS MEETING

**Earth System Changes**  
from the Past towards  
the Future

# **PAGES 2025 HANDBOOK**

## **5th YOUNG SCIENTISTS MEETING**

**19-20 May 2025 | Shanghai, China**



**中国科学院**  
CHINESE ACADEMY OF SCIENCES



**scnat**  
swiss academy of sciences



# Welcome Message

Dear participants,

We are delighted to welcome you to the 5th PAGES Young Scientists Meeting (YSM), held at the prestigious and innovative Tongji University in China. Since its inception, PAGES has been committed to fostering interdisciplinary research on past global changes to enhance our understanding of Earth's

climate and environment. As a Global Research Network of Future Earth and a scientific partner of the World Climate Research Programme (WCRP), PAGES continues to support early-career researchers in making meaningful contributions to this field.

The YSM was established to provide a platform for

early-career researchers to exchange ideas, present their work, and engage in discussions with peers and senior scientists. Following the successful meetings in Corvallis (USA, 2009), Goa (India, 2013), Morillo de Tou (Spain, 2017), and a virtual edition in 2021, we are excited to bring the fifth edition of this inspiring event to Shanghai, a city that seamlessly blends tradition and modernity, provides an exciting backdrop for this meeting. We encourage you to explore its rich cultural heritage, diverse cuisine, and innovative atmosphere during your stay.

We look forward to a productive and inspiring meeting and hope that the connections you forge here will lead to lasting collaborations and future scientific endeavors.

**PAGES YSM Scientific  
Committee**



<b>1</b>	<b>General Information</b>	Introduction	<b>01</b>
		Organizers and Sponsors	<b>01</b>
		Scientific Committee	<b>02</b>
<b>2</b>	<b>Logistics</b>	Registration	<b>03</b>
		Meeting Venue	<b>05</b>
		Hotel and Accommodation	<b>06</b>
		Transport and Directions	<b>07</b>
		Catering	<b>09</b>
		Visa Assistance	<b>09</b>
		Accessibility	<b>10</b>
		Practical Information	<b>11</b>
<b>3</b>	<b>Conference Program</b>	Program Index	<b>12</b>
		Invited Talk	<b>13</b>
		Panel Discussions	<b>13</b>
		Flash Talks	<b>14</b>
		Social Events and Refreshments	<b>14</b>
		Presenter Guidelines	<b>15</b>
<b>4</b>	<b>Academic Program</b>	Poster Sessions and Breakout Groups	<b>16</b>
<b>5</b>	<b>Appendices</b>	Code of Conduct	<b>26</b>
		Gender Equity and Diversity Statement	<b>27</b>
		Picture Permission Policy	<b>28</b>
		List of Breakout Group Participants	<b>29</b>
<b>6</b>	<b>Contact Us</b>		<b>33</b>

## Table of Contents

# 1 General Information

## 1.1 Introduction

The 5th PAGES Young Scientists Meeting (YSM) hosted in Shanghai, China, in 2025, presents a unique opportunity for early-career researchers from around the world to showcase their ongoing research, interact with experienced scientists, and expand their professional network.

Through panel discussions, poster sessions and networking opportunities, the 5th PAGES YSM aims to inspire and empower the next generation of scientists, encouraging all participants to actively engage, share their perspectives, and build lasting connections that will shape the future of paleoscience. The YSM constitutes a start to the Open Science Meeting (OSM) for the participants.

**Location** Tongji University,  
Shanghai, China

**Dates** 19-20 May 2025

**Email**  
[pages2025@tongji.edu.cn](mailto:pages2025@tongji.edu.cn)

**Official Website**  
[www.pages2025.org.cn](http://www.pages2025.org.cn)

**WeChat Official Account**  
PAGES 2025 (see QR code)



## 1.2 Organizers and Sponsors



海洋地质  
全国重点实验室  
State Key Laboratory of  
Marine Geology



中国大洋发现计划  
INTERNATIONAL OCEAN  
DISCOVERY PROGRAM, CHINA



## 1.3 Scientific Committee

### Members

(in alphabetical order of the surnames)

Haowen Dang	Tongji University, Shanghai, China
Eugenia Ferrero	CCT-CONICET-MENDOZA, Mendoza, Argentina
Marie-France Loutre	PAGES International Project Office (IPO), Bern, Switzerland
Keely Mills	British Geological Survey, Nottingham, UK
Juliana Nogueira	Czech University of Life Sciences Prague, Prague, Czechia
Christine Omuombo	Technical University of Kenya, Nairobi, Kenya
Tsilavo Razafimanantsoa	University of Cape Town, Cape Town, South Africa
Shiling Yang	Institute of Geology and Geophysics Chinese Academy of Sciences, Beijing, China



## 2 Logistics

### 2.1 Registration

Please visit the official conference website to register online. You can update personal information, submit an abstract, register for the conference, check your payment status and book accommodation in the user center.

Registered attendees can download their confirmation email to pick up their conference material on-site. The registration desk is located in the lobby on the first floor of the Radisson RED, open from 14:00 to 20:00 on 18 May 2025. Please bring your registration confirmation email and valid ID for check-in.

**Claim your name badge at the registration desk. Please be sure to wear your name badge at all times, as you will not be able to access the venue without it.**

#### Eligibility

The YSM is open on a competitive basis to approximately 80 outstanding early-career researchers who meet the following criteria:

##### Career status

PhD Students - Usually in the latter stages of their degree

Post-PhD - Usually within five years of completing their degree (and dated back from

day 1 of the YSM, 19 May 2025)

##### Scientific scope

Paleoscientists (data-based or modelers) or global change scientists with a strong, proven interest in paleoscience.

The participants will be selected on the basis of the quality of the application and suitability.

#### Application and Abstract Submission

The submission for application has closed on 10 December 2024.

The registration fee is 1500 CNY. There is financial support available which can be applied for through the YSM application procedure.

Registering for the two events takes place as follows:

- Step 1: Register online for the OSM and submit your abstract on [pages2025.org.cn](https://pages2025.org.cn)
- Step 2: Apply to attend the YSM via the PAGES online webform by 10 December 2024 and include the ID number from the OSM registration.
- Step 3: Once notified of your acceptance to attend the YSM (1 February 2025), register for the YSM via the User Center on the official OSM and YSM 2025 website using the same account previously created to submit an abstract to the OSM.



## Note

Please be aware that as the YSM and OSM take place in separate locations in Shanghai, hotel bookings and registration will need to be made separately for both events in the User Center.

## Payment Details

- Credit Card  
VISA, MASTERCARD, JCB, American Express
- Alipay, WeChat payment  
20 major domestic banks
- Bank (Wire) Transfer  
Payment by bank transfer is available  
until 20 April 2025

## Invoice

Attendees may enter their invoice information in the registration system on the official website. After the payment is completed, attendees can fill in the relevant information in the system to obtain the invoice.

## Cancellation Policy

Cancellation requests must be emailed to the Conference Secretariat.

Cancellations made before 1 March 2025 will be fully refunded. Participants cancelling before 20 April 2025 will receive a 50% refund. No cancellation allowance is possible from 21 April 2025 onwards.

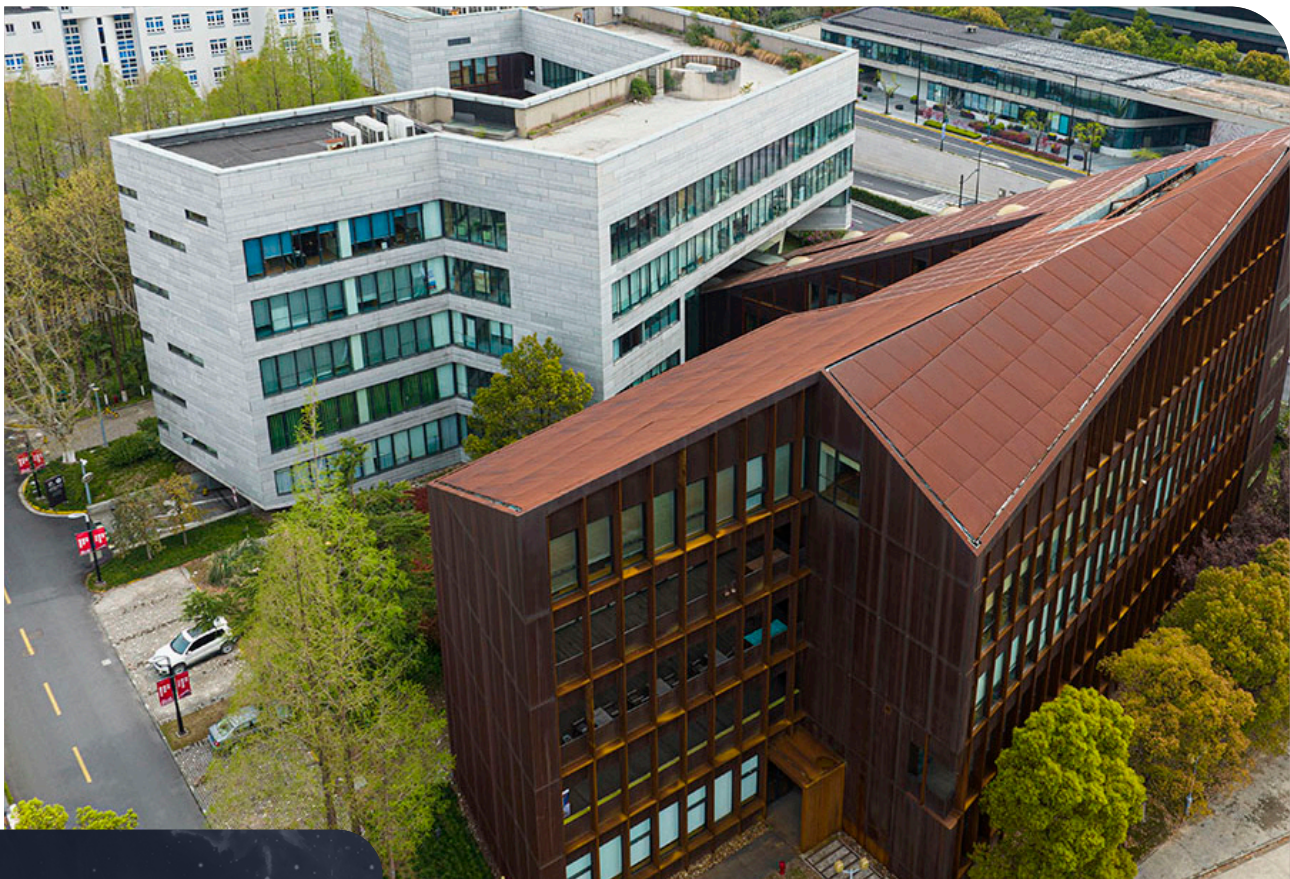
There will be no cancellation allowance for failure to secure a visa to China. The organizing committee reserves the right to make the final decision on a case-by-case basis for granting a refund in extenuating circumstances. Check your travel insurance policy to see if it covers problems about obtaining a visa.

Important note: We are entitled to cancel the event or postpone it in the case of Force Majeure (such as a pandemic, natural disaster, public measures, as well as operational disruptions). In such a case, participants will be informed in due time. Participants will be refunded 60% of all payments, if the event is not going to take place; further claims by the participant are excluded in this case.





## 2.2 Meeting Venue



**Sino-French Center,  
Tongji University**

同济大学中法中心

**Address**

No.1239 Siping Road,  
Shanghai, China

上海市四平路 1239 号

Claim your name badge at the registration desk. Please be sure to wear your name badge at all times, as you will not be able to access the venue without it.

### Venue Layout (the white building)

C201	– (2nd floor)
C301	– (3rd floor)
C401	– (4th floor)
Poster Hall	– (Basement 1st floor)
Coffee/tea Break	– Balcony (Basement 1st floor)
Registration Desk	– Lobby of Radisson RED Hotel

The 5th PAGES YSM will take place at Tongji University (Siping Road Campus), located in Shanghai. With a history of over a century. Renowned for its strong research capabilities and international collaborations, Tongji University is ranked among the top universities in China and holds a significant global reputation.

Located in Tongji Siping campus, the Sino-French Center is a unique architectural landmark designed to promote cultural and academic exchanges between China and France.



## 2.3 Hotel and Accommodation

### Radisson RED Shanghai Wujiaochang Hotel

上海五角场丽芮酒店

The Radisson RED Shanghai Wujiaochang Hotel is located in Siping Road, Yangpu District, Shanghai, adjacent to Wujiaochang business district and Tongji University. The transportation around the hotel is convenient. You can walk about 3 minutes to Metro Line 10, which pass through various famous tourist and cultural attractions, and several bus routes can directly reach the downtown area.

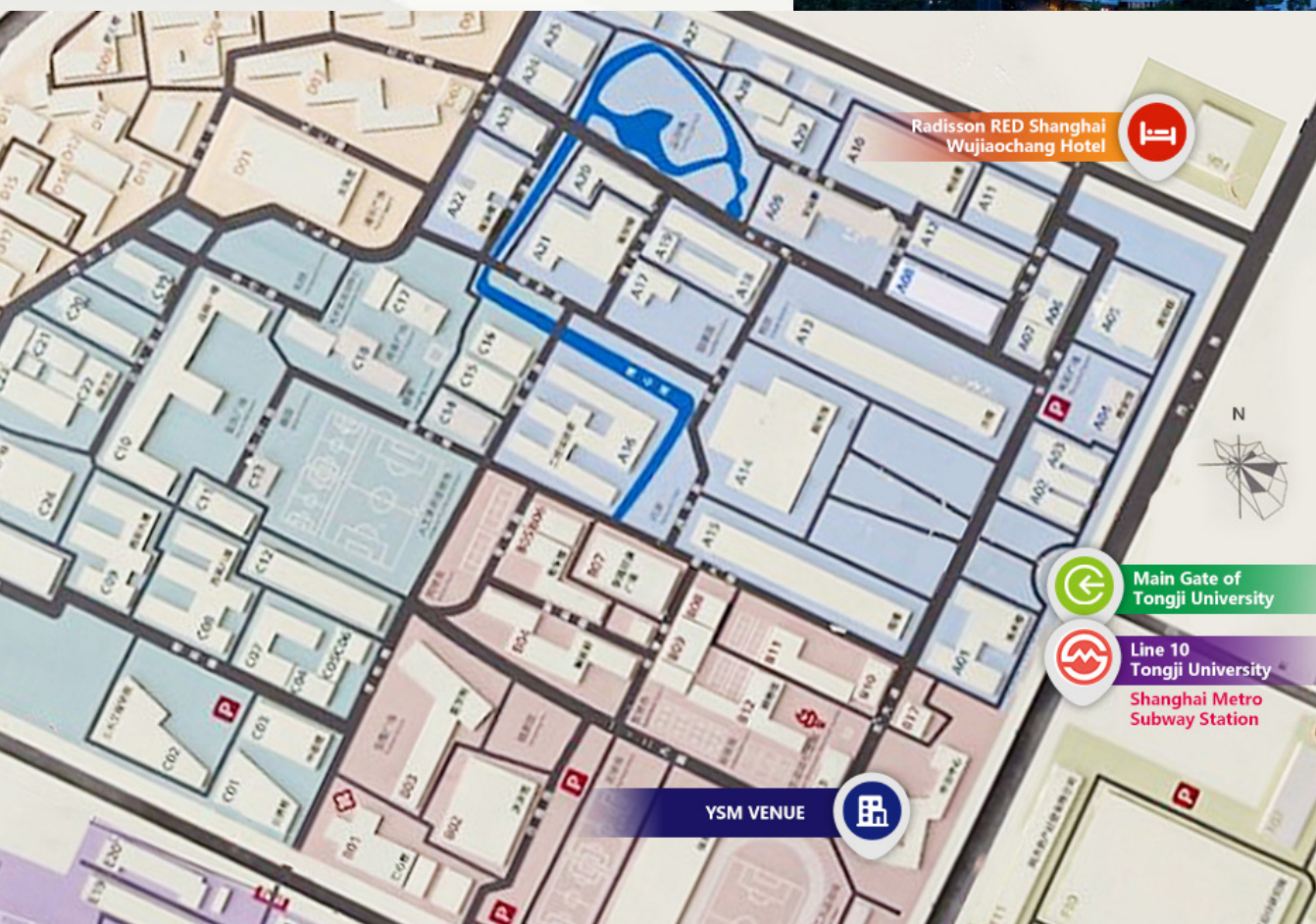
#### Address

No.1251 Siping Road, Yangpu District,  
Shanghai, China

上海市杨浦区四平路 1251 号

**Contact** Email: lily\_ybl@163.com

- Please note that hotel reservation is available in the user center (<https://www.pages2025.org.cn/Passport/Login>).
- The number of available discounted rooms is limited. We suggest you submit your reservation request as soon as possible.
- Please make sure to complete your registration before making a hotel reservation.
- All the hotel expenses shall be settled directly with the hotel upon check-out, and the invoice will be obtained at that time.



Map of Tongji University (Siping Road Campus) and  
Radisson RED Shanghai Wujiaochang Hotel

## 2.4 Transport and Directions

### From Shanghai Pudong International Airport



	By Taxi	By Metro
<b>Duration</b>	~ 1h	~ 1h 30 min
<b>Fare</b>	~ 230 CNY	7 CNY
<b>Additional fee</b>	0 to 29 CNY for using the expressway. No extra charges should be applied.	Line 2 (Exit train at East Nanjing Road) -> Line 10 (Exit train at Tongji University) -> 7-min walk from subway station to the hotel
<b>Operating hours</b>	24 h	(Pick up time) 06:00-21:30 (approx.)

### From Shanghai Hongqiao International Airport



	By Taxi	By Metro
<b>Duration</b>	~ 50 min	~ 1 h
<b>Fare</b>	~135 CNY	9 CNY
<b>Additional fee</b>	0 to 7 CNY for using the expressway. No extra charges should be applied.	Line 10 (Exit train at Tongji University) -> 7-min walk from subway station to the hotel
<b>Operating hours</b>	24 h	(Pick-up time) 05:25-22:30 (approx.)



### From Shanghai Hongqiao Railway Station

	By Taxi	By Metro
<b>Duration</b>	~ 1h	~ 1 h
<b>Fare</b>	~ 135 CNY	5 CNY
<b>Additional fee</b>	0 to 7 CNY for using the expressway. No extra charges should be applied.	Line 10 (Exit train at Tongji University) -> 7-min walk from subway station to the hotel
<b>Operating hours</b>	24 h	(Pick-up time) 05:25-22:30 (approx.)





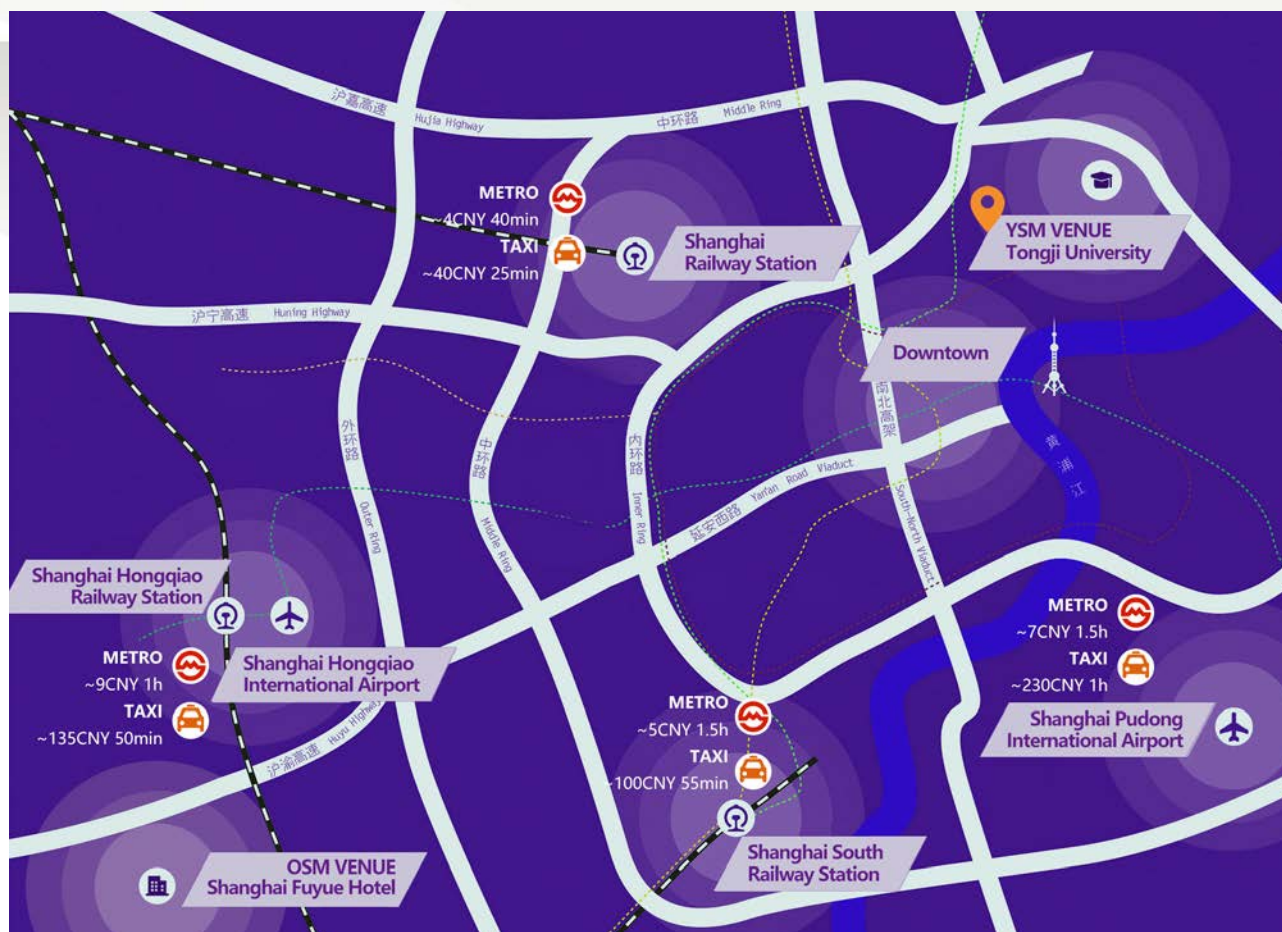
## From Shanghai South Railway Station

	By Taxi	By Metro
<b>Duration</b>	~ 55 min	~ 1 h 30 min
<b>Fare</b>	~ 100 CNY	5 CNY
<b>Additional fee</b>	0 to 4 CNY for using the expressway. No extra charges should be applied.	Line 1 (Exit train at South Shaanxi Road) -> Line 10 (Exit train at Tongji University) -> 7-min walk from Subway station to the hotel
<b>Operating hours</b>	24 h	(Pick-up time) 05:18-22:42 (approx.)



## From Shanghai Railway Station

	By Taxi	By Metro
<b>Duration</b>	~ 25 min	~ 40 min
<b>Fare</b>	~ 40 CNY	4 CNY
<b>Additional fee</b>	0 to 7 CNY for using the expressway. No extra charges should be applied.	Line 4 (Exit train at Hailun Road)-> Line10 (Exit train at Tongji University)-> 7-min walk form subway station to the hotel
<b>Operating hours</b>	24 h	(Pick-up time) 05:30-23:00 (approx.)



- After the YSM concludes on 20 May, we will arrange shuttle buses to transport all YSM attendees to the OSM venue, Fuyue Hotel. Please ensure you take all your belongings with you. Our staff will be waiting to escort everyone to the boarding point on time.

**Boarding Point: Lobby of Radisson RED Hotel**

**Assembly Time: 16:50, 20 May**

**Departure Time: 17:00, 20 May**

## 2.5 Catering

Daily lunch (Boxed Meal) and coffee breaks will be provided at the venue, and dinner will be served at the Radisson RED Hotel. Attendees should pay attention to catering updates during the conference.

## 2.6 Visa Assistance

for International Attendees

China requires the citizens of many foreign countries to obtain visas to enter the People's Republic of China. If you are not a Chinese citizen and are intending to attend the PAGES YSM and OSM 2025, please ensure you obtain the correct visa to enter the country. Please check your Chinese consular in your country to verify the entry, exit, visa, vaccination and passport validity requirements for travelling to China.

- You can find information about visas for China at [www.visaforchina.cn](http://www.visaforchina.cn)
- Ensure you apply for the visa at least two months prior to the conference to allow enough time for processing.

China has extended a pilot short-stay visa waiver policy for ordinary passport holders of 38 countries. For more details, please visit the Chinese government website (<http://cs.mfa.gov.cn/wgrlh/lhqz/lhqzjjs/>). Until 31 December 2025, ordinary passport holders from these countries can enter China visa-free and stay for up to 30 days for business and trade, tourism, family and friends visits and transit purposes. Travelers from the above-

mentioned countries who do not meet the conditions for visa exemption still need to apply for a visa before entering China.

### PAGES 2025 Visa Letter

The option to request an invitation letter will be made available during your online registration. The PAGES Local Organizing Committee (LOC) supplies this letter for visa purposes only. For further details, please consult the website of the relevant Chinese Embassy or Consulate General to check the entry and health requirements for China.

**List of Chinese Embassies** [https://www.fmprc.gov.cn/eng/zwjg/zgdsg/2491\\_665346/](https://www.fmprc.gov.cn/eng/zwjg/zgdsg/2491_665346/)

**List of Chinese Consulates General** [https://www.fmprc.gov.cn/eng/gjhdq\\_665435/2675\\_665437/](https://www.fmprc.gov.cn/eng/gjhdq_665435/2675_665437/)



## 2.7 Accessibility

### One Stop Service Point for participants with specific needs

The PAGES YSM 2025 Local Organizing Committee is committed to accommodating people with disabilities. Before 20 April, please get in touch with [pages2025@tongji.edu.cn](mailto:pages2025@tongji.edu.cn) indicating “Accessibility Services” in advance.

At the PAGES 2025 Information (“Info”) Desk, you will get help and support throughout the whole conference. Please get in touch whenever there is something to be arranged for you!

### Accessible Travel in Shanghai

The city’s public transportation system is well-equipped with ramps and elevators. Shanghai offers accessible tourist spots like The Bund and Yu Garden. Moreover, the city's modern metro system is generally wheelchair-friendly.

As a rather convenient campus, Tongji University (Siping Road Campus) is located in Shanghai with a nice park-like surrounding. All publicly available buildings and rooms used for the 5th PAGES Young Scientists Meeting (YSM) are fully wheelchair accessible and equipped with wifi (e.g. EDUROAM).

### Accessible Accommodation

Please check as soon as possible for accessible rooms - get in touch with [pages2025@tongji.edu.cn](mailto:pages2025@tongji.edu.cn) should you need assistance with accessible accommodation.

### Specific Needs Assistants

Our staff will also help you to find your way at the venue.

If you need help during the conference, please don't hesitate to ask for help. You will find assistance at the Info Desk.

---

If you want to make use of any of the above mentioned services or want to announce other issues, please get in touch as soon as possible by email: [pages2025@tongji.edu.cn](mailto:pages2025@tongji.edu.cn)



## 2.8 Practical Information

### Payment and Currency Tips

for Foreign Visitors to China

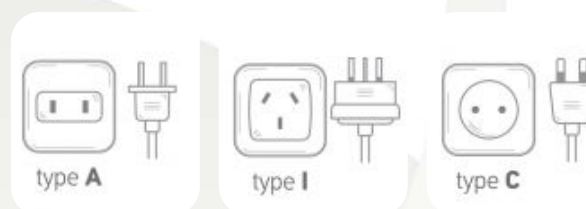
- **Cash:** It's recommended to have some local currency, the Chinese yuan (CNY), with you upon arrival, for immediate expenses. You can exchange foreign currency for CNY in advance before your arrival. Foreign bank cards can be used at ATMs to withdraw CNY. Ensure your card is enabled for international transactions and check for any fees.
- **Credit/Debit Cards:** While international cards like Visa, MasterCard, and American Express are increasingly accepted in Shanghai, for example at airports, in commercial areas and tourist spots, they are not always accepted at smaller businesses, locals shops or street vendors.
- **Mobile Payments:** Mobile payment platforms like WeChat Pay and Alipay are commonly used in China. You can link your international bank card to these apps for seamless transactions. You'll need to set up an account. Once set up, scanning QR codes at merchants is the most common way to pay.
- **Tipping:** Tipping is not a common practice in China, and it's not expected in most places. In fact, many restaurants and services include a service charge in the bill.

---

To learn more, please check <https://english.shanghai.gov.cn/en-BankingServices/>

### Electrical Standards in China

Please be advised that China operates on a 220V, 50Hz electrical system. The power outlets typically use Type A, Type I and Type C plugs. We recommend bringing a suitable power adapter for your devices to ensure they work properly during your stay, if necessary, a voltage converter to ensure safe usage to avoid any inconvenience.



### Emergency Numbers

For your safety and convenience during your stay in China, please take note of the following emergency contact numbers:

**Police: 110**

**Fire Emergency: 119**

**Medical Emergency: 120**

**Traffic Accidents: 122**

There is a campus clinic in Tongji University that can provide basic medical assistance.

For questions or further information, please email us at [pages2025@tongji.edu.cn](mailto:pages2025@tongji.edu.cn).

For urgent matters, please call Shouting Tuo at +86-136 0187 2997.



# 3 Conference Program

## 3.1 Program Index

	18 May (Sunday)	Venue	19 May (Monday)	Venue	20 May (Tuesday)
09:00-09:30		C201	Welcome Words and Practicalities	C201	Flash Talks
09:30-10:00		C201	Flash Talks		Flash Talks
10:00-10:30			Flash Talks	Poster Hall	Poster Session
10:30-11:00		Balcony	Coffee/ tea Break	Balcony	Coffee/ tea Break
11:00-11:30		Poster Hall	Poster Session	C201, C301, C401, Poster Hall	Breakout Group
11:30-12:00		C201	Invited Talk		
12:00-13:00		Lunch			
13:00-14:00		C201, C301, C401, Poster Hall	Breakout Group	C201	Panel Discussion
14:00-15:00	Registration (Lobby of Radisson RED Hotel)	C201	Panel Discussion	C201, C301, C401, Poster Hall	Breakout Group
15:00-15:30		C201, C301, C401, Poster Hall	Breakout Group	Poster Hall	Poster Session
15:30-16:00				Balcony	Coffee/ tea Break
16:00-16:30		Poster Hall	Poster Session	Poster Hall	Poster Session
16:30-17:00		Balcony	Coffee/ tea Break	C201	Closing
17:00-17:30		Poster Hall	Poster Session	Radisson RED Hotel	Transfer to OSM
18:00-18:30		Icebreaker Bingo (Radisson RED Hotel 15F)	Radisson RED Hotel 15F	Dinner	
18:30-19:00	Social Event				
19:00-20:30	Icebreaker/ Social Event incl. dinner (Radisson RED Hotel 15F)			Fuyue Hotel, Fuyue Hall (3rd floor)	OSM Icebreaker

- Breakout groups: Based on 10 different topics, the discussions will be divided into 8 groups. Each group will include about 10 participants (see appendices). Participants will move to one of the 4 discussion rooms, i.e. C201, C301, C401, Poster Hall. Two groups will enter one room for discussion.



## 3.2 Invited Talk



**Yassine Ait-Brahim**

**Delving into North Africa's past: Speleothem-paleoclimate research (and the role of PAGES)**

VENUE: C201

11:30-12:00 **19 May**

## 3.3 Panel Discussions



**Forging a career – Academic and non-academic examples, including CV building, social media and other online tools**

**Panelists**

**Prof Xu Zhang (Invited),**  
Yassine Ait-Brahim and Keely Mills

VENUE: C201

14:00-15:00 **19 May**



**The art of Persuasion – Mastering scientific communication. How to advocate for the relevance and importance of paleoresearch to a funding agency or a policy maker**

**Panelists**

**Dr. Asfawossen Asrat Kassaye (invited),**  
Christine Omuombo and Eugenia Ferrero

VENUE: C201

13:00-14:00 **20 May**



### 3.4 Flash Talks

Flash Talks are where participants are expected to present their poster in 2 minutes to the audience. There is no Q&A session during, or directly after, these talks. Questions can be asked and answered during the poster sessions.

It is voluntary to give a Flash Talk, but compulsory to attend.

VENUE: C201

09:30-10:30 **19 May**

VENUE: C201

09:00-10:00 **20 May**

### 3.5 Social Events and Refreshments

#### Icebreaker Bingo

##### TIME

18:00-19:00, 18 May

##### VENUE

Radisson RED Hotel 15F

#### Icebreaker (incl. dinner)

##### TIME

19:00-20:30, 18 May

##### VENUE

Radisson RED Hotel 15F

#### Social Event (incl. dinner)

##### TIME

18:00-19:00, 19 May

##### VENUE

Radisson RED Hotel 15F



## 3.6 Presenter Guidelines

### Oral Presentation

- All presentations and discussions are run on-site using the lecture room settings for in-person attendees. There is no virtual option available.
- The presentation slides (invited speaker, panelist as well as for the flash talk) must be uploaded to the computer using a usb stick in the meeting room C201 half hour before the start of the meeting. Alternatively, presenters may copy their presentation slides to the designated registration desk computer during registration on 18 May.
- There will be one computer available. Switching between computers will not be possible.
- Presentation slides are suggested to be saved in \*.pptx or \*.pdf formats with aspect ratio of 16:9 to have an optimum use of the screen. Please remember to use a conventional font (Arial, Times New Roman, Calibri) in order to avoid unwanted font distortion while presenting.

### Poster Presentation

- It is compulsory for every YSM participant to present a poster of their research.
- This poster can be, but does not have to be,

the same poster that is presented at the Open Science Meeting (OSM).

- Participants will be expected to assess two peer posters and provide feedback on these posters.
- There will be a poster prize at the end of the YSM.

Presenters are required to print their own posters and bring them to the Poster Hall. The posters can be displayed for 2 days during the conference. Each poster is assigned with a poster No. and an abstract ID.

- Participants can also print their posters at the printing shop near the conference venue. More detailed information will be provided during on-site registration.
- Poster boards are in portrait A0 format, and authors can make use of the full dimensions of 841 mm width × 1189 mm height.
- Removable tapes for attaching posters to the poster board are available in the Poster Hall. Additional tapes can be requested from the facility desk in the poster area.
- Presenters are kindly requested to put up their posters before 9am on 19 May, and must be present at the poster for their attendance time indicated in the timetable.
- Posters must be removed by 5pm 20 May, any remaining posters will be removed and discarded by conference staff.

---

### Official language

The official language of the conference is English. Simultaneous translation is not available. It is therefore expected that authors are able to present their research more or less fluently in the English language.



# 4 Academic Program



## Poster Sessions

11:00-11:30

### Group 2

No.	Title	Presenter	Abstract ID
14	Concurrent Pan-Pacific decadal hydroclimate extremes driven by Pacific decadal variability over the last millennium	Anson Cheung	A0623
38	Seasonal monsoon variations and collapse of Late Bronze Age civilization in China	Fangyuan Lin	A0540
56	Using multi-proxy to reconstruct the vegetation in northwestern Madagascar throughout the mid-Holocene and its relevance to biodiversity conservation	Fetraharimalala Ombanjanahary Randriatsara	A0254
2	Palynological analysis of modern and archeological ungulate feces: Investigating taxonomic diversity and agropastoral practices in a little explored Andean area from South America	Florencia Agliano	A0286
50	Modelling Antarctic margin response to Pleistocene like warming	James O'Neill	A0598
44	Asian monsoon orbital variability directly paced by CO <sub>2</sub> and precession, not eccentricity	Jeanne Millot-Weil	A0241
32	The precession cycles in East Asian stalagmite records before the MPT constrained by carbonate U-Pb dating	Le Kang	A0229

POSTER

Mon. 19 May

No.	Title	Presenter	Abstract ID
20	Holocene environmental change in the northern Ecuadorian Andes: First insights from lake sediment archives	Lisa Feist	A0864
74	Chemical weathering throughout the Yarlung Zangbo river system on the Tibetan Plateau	Mingyang Yu	A0520
8	Wine, vagrants and volcanoes: Impacts of 17th century multi-eruption events on municipal hospitals in early modern Switzerland	Niklaus Emanuel Bartlome	A0564
68	From fire to famines? The climate and human impacts of the 1831 and 1835 volcanic eruptions in India, China and Japan	Richard Warren	A0048
62	Identification of the Cretaceous-Paleogene boundary at northern Ninetyeast Ridge: Evidence from planktonic foraminiferal biostratigraphy and portable X-Ray fluorescence analysis	Yawen Shang	A0179
26	Climate of the last 2500 years in the central Andes of Peru based on peatland deposition	Yizet Eufemia Huaman Navarro	A0467
16:00-16:30			
Group 3			
No.	Title	Presenter	Abstract ID
9	Parasites in rodent middens as indicators of ecological and environmental dynamics during the Late Quaternary in the Atacama Desert	Agustín Bellusci	A0199
69	Unravelling abrupt transitions of Antarctic Ice Sheet dynamics during the mid-Pleistocene transition	Christian Wirths	A0561
57	Oscillations in mid- to late Holocene environments of the lower Negro River, central Amazonia, recorded in pollen and diatom from Lake Pacu sediments	Erika Rodrigues	A0040
45	Multiproxy reconstructions for bottom water oxygenation dynamics in the Gulf of Cadiz during the Early to Middle Pleistocene Transition (EMPT)	Giulia Molina	A0595
39	Monsoon activity and paleoceanographic responses in the southwestern Andaman Sea since 1.45 Ma	Jiajian Lin	A0174



No.	Title	Presenter	Abstract ID
33	Rapid or gradual cultural change - exploring the Bantu migration and its impacts on the indigenous communities in East and Southern Africa	Philbert Mbezi Katto	A0105
15	Sedimentary DNA reveals historical cyanobacterial responses to environmental and anthropogenic changes	Robin Michael Crucitti-Thoo	A0200
63	Linking Tephra Layers to climate shifts: A multi-proximal approach from Björn drift contourite deposits (IODP expedition 395)	Thena Thulasi Doss	A0359
3	Responses of Amazonian vegetation to a slowdown of the Atlantic Meridional Overturning Circulation: Past perspectives and future insights	Thomas Kenji Akabane	A0018
27	Warming-induced changes of dry-wet boundary in northern China	Xiaofang Huang	A0133
51	A global high-resolution modeling of the Mid-Holocene climate	Yaning Ou	A0883
75	Millennial-scale evolution of South Asian summer monsoon during the late Pliocene recorded in the Yuanmou Basin, southwestern China	Ze Zhang	A0908

17:00-17:30

Group 4

No.	Title	Presenter	Abstract ID
22	Exploring coccolith morphology proxies for assessing carbonate saturation changes	Amanda Gerotto	A1037
34	Orbitally paced local overprint of a global climate change: The Eocene-Oligocene transition in the Transylvanian Basin (Central Paratethys)	Anna Kicsi	A0310
70	Intermediate water dynamic recorded by authigenic Nd isotope in the north Atlantic across the mid-Pleistocene transition	Antao Xu	A0129
16	30-years of palaeoenvironmental variation at the end of the Little Ice Age reconstructed from a giant clam shell from the northern Great Barrier Reef	Bohao Dong	A0227

POSTER

Mon. 19 May

No.	Title	Presenter	Abstract ID
40	Influences of pre-aged terrigenous organic carbon on deep-sea ventilation reconstruction	Jingyu Liu	A0426
46	Last millennium changes in Mississippi River Basin hydroclimate as a framework for understanding future anthropogenic impacts	Kelsey Murphy	A0603
4	Mesoscale convective systems from the Cenozoic into the future: Insights from high-resolution community Earth system model simulations	Mary Grace Albright	A0256
52	Indian Monsoon driven N <sub>2</sub> O emission in the Arabian Sea during the last two interglacial Cycles	Rahul Pawar	A0423
28	Stalagmite records of Holocene climate change on the Chinese Loess Plateau	Shouyi Huang	A0517
10	Cautionary tales in paleoproductivity reconstruction: A case study from the Bay of Bengal	Sudhira Ranjan Bhadra	A0242

POSTER

Mon. 19 May



Breakout Groups		
13:00-14:00		
Topic	Moderators	Venue
1. Navigating Interdisciplinary Research Challenges	Asfawossen Asrat Kassaye	Poster Hall
2. Mentorship and Networking Opportunities	Christine Omuombo	C201
2. Mentorship and Networking Opportunities	Keely Mills	Poster Hall
3. Exploring Opportunities: Funding Strategies and Career Advancement in Paleoenvironmental Research	Eugenia Ferrero	C301
5. Adapting to Remote and Collaborative Work Environments	Andriantsilavo Razafimanantsoa	C201
6. The Scientific Publication: What is its future and how did it all start?	Haowen Dang and Juliana Nogueira	C301
7. Manuscript Preparation and Submission Strategies	PAGES IPO	C401
9. The Future of Research: What do you need? What do you expect from PAGES?	Shiling Yang	C401
15:00-16:00		
Topic	Moderators	Venue
1. Navigating Interdisciplinary Research Challenges	Asfawossen Asrat Kassaye	Poster Hall
2. Mentorship and Networking Opportunities	Christine Omuombo	C201
3. Exploring Opportunities: Funding Strategies and Career Advancement in Paleoenvironmental Research	Eugenia Ferrero	C301
4. Overcoming Imposter Syndrome and Building Confidence	Juliana Nogueira	C201
6. The Scientific Publication: What is its future and how did it all start?	Haowen Dang	C301
7. Manuscript Preparation and Submission Strategies	PAGES IPO	C401
9. The Future of Research: What do you need? What do you expect from PAGES?	Shiling Yang	C401
10. Promoting Diversity and Inclusion	Keely Mills	Poster Hall

Poster Sessions			
10:00-10:30			
Group 5			
No.	Title	Presenter	Abstract ID
5	Reconstruction of the hydroclimate variability in the southern Andaman Sea over the last 110 ka	Ana Alves	A0329
53	Holocene vegetation history of western Chukotka inferred from pollen records	Denis Petrov	A0496
11	Indo-Pacific climate variability modulates subsurface temperature variability recorded in Andaman Sea corals during the last centuries	Hana Camelia	A0225
35	Impact of meteorological-scale phenomena on paleoclimate reconstructions: Uncertainties in stable water isotope variations in Antarctic ice cores due to synoptic-scale atmospheric circulation	Kanon Kino	A0664
59	Precise timing, duration and impact of 4.2 ka event on monsoon seasonality and productivity in the southwestern Bay of Bengal	Mohd Salman	A0523
65	From past to present: Diversity trends of benthic foraminifera in the margin of NW South America	Raul Trejos Tamayo	A0777
29	Reconstructing atmospheric sea salt aerosol variability over 800,000 years using the EPICA Dome C ice core	Sarah Jackson	A0459
23	On the potential of glaciochemical analysis of Joinville Island firn core for the sea ice reconstruction around the northern Antarctic Peninsula	Sérgio Gonçalves Jr.	A0954
41	Ostracode $\delta^{18}\text{O}$ values from Kiritimati Island reconstruct central tropical Pacific climate over the past 1700 years	Shane Lusk	A1043
47	Millennial-scale variability of the Asian summer monsoon over the last 690,000 years: Insights from cave records	Xiaowen Niu	A0431
77	Long-term dynamics of biodiversity and compositional stability of diatom community under climate warming in a mid-latitude remote lake	Yanjie Zhao	A0102



No.	Title	Presenter	Abstract ID
17	The impacts of an AMOC slowdown on Australasian hydroclimate during Heinrich 5 and the 8.2 ka event	Yanxuan Du	A0336
71	Shallow benthic foraminifera as indicator of environmental changes in Singapore	Yuting Yan	A0647
15:00-15:30			
Group 6			
No.	Title	Presenter	Abstract ID
30	East Antarctic ice sheet and solid earth response since Last Deglaciation: Evidences from lake sediments	Avirajsinh Jadav	A0525
78	Orbital variability and climatic drivers modulating the East and South Asian monsoons during the last 70 kyrs: New insights from the Korean vegetation	Coralie Zorzi	A0147
48	Millennial-scale impacts of climate and land use on Fynbos vegetation in the Cape Floristic Region, South Africa	Glory Oden	A0161
6	Deciphering climate patterns across the last glacial-interglacial transition in Northwest Africa: Insights from speleothems	Khalil Azennoud	A0547
60	Pollution history and anthropogenic-induced increase in the transport of toxic metals from Australia to Sub-Antarctic islands	Margot Aurel Schneider	A0218
24	AMOC modulates ocean heat content during the last four deglaciations	Markus Grimmer	A0755
18	Planktonic foraminifera and temperature records highlight climatic changes on the southern Portuguese margin during the Early-to-Middle Pleistocene (1.54–0.75 Ma)	Monica Liliana Duque-Castaño	A0684
66	Evaluation of sedimentary DNA as a Southern Ocean sea ice proxy	Nele Manon Vollmar	A0143
36	The stalagmite-inferred interplay between the westerlies and the Indian summer monsoon on centennial to decadal scales over the south-western Tibetan Plateau during the last interglacial	Ruoxin Li	A0429

No.	Title	Presenter	Abstract ID
72	Tropical surface and intermediate water changes in the northern Indian Ocean over the last two glacial terminations	Siyao Mark Yu	A0794
54	Extreme drought around 900ka in Southwestern Iberia - Insights from pollen records	Xiaowen Quan	A0027
12	Examining the role of the Pacific Ocean in the unusual warming of the western Indian Ocean over past century	Yunfan Chen	A0796

16:00-16:30

## Group 1

No.	Title	Presenter	Abstract ID
61	Impact of summer-persistent ENSO events on the global climate and the occurrence of extreme weather events	Anna Schultze	A0601
7	Holocene Environmental Changes in Morocco: A comprehensive database	Asmae Baqloul	A0530
25	Linked molecular and isotopic indicators of fire history, population, vegetation and climate change in the Maya lowlands	Benjamin Gwinneth	A0875
55	How can Norwegian mountain peatbogs represent useful archives to understand the effect of precipitation on peatlands carbon budget?	Christian Hans Quintana Zagaceta	A0077
31	Environmental and ecological impacts of European colonialism in South Asia	Deepak Kumar Jha	A0845
37	Simulated tropical Atlantic-Pacific climate variability changes under Holocene and Last Interglacial boundary conditions	Donghao Li	A0250
49	AWI's contribution to PlioMIP3 with two generations of Earth System Models	Fernanda Oliveira Matos	A0283
67	LA&ID-MC-ICPMS U-Pb dating of carbonate and its applications	Jian Wang	A0434
1	Paleoenvironmental reconstruction of Laguna Ñe Luan, Patagonia, Argentina: Rock magnetic and geochemical analyses	Romina Achaga	A0468

POSTER

Tue. 20 May

No.	Title	Presenter	Abstract ID
19	Reconstructing the past shifts in Southern Ocean fronts using the planktonic foraminiferal assemblages	Sreevidya Edayilam	A0361
43	First discovery of the Laacher See Tephra in the Eastern Alps: Necessity for reassessing fallout patterns	Verena Meier	A0364
73	Reconstructing stratospheric sulfur aerosol loading for extratropical volcanic eruptions: New insights from sulfur isotopes in Greenland ice cores	Yang Yu	A0618
13	Protecting the future by learning from the past: Salmon nursery lake ecosystem reconstruction through sedimentary DNA	Yuanyu Cheng	A0204



## Breakout Groups

11:00-12:00

Topic	Moderators	Venue
1. Navigating Interdisciplinary Research Challenges	Asfawossen Asrat Kassaye	Poster Hall
2. Mentorship and Networking Opportunities	Christine Omuombo	C201
3. Exploring Opportunities: Funding Strategies and Career Advancement in Paleoenvironmental Research	Eugenia Ferrero	C301
3. Exploring Opportunities: Funding Strategies and Career Advancement in Paleoenvironmental Research	Xu Zhang and Yassine Ait-Brahim	Poster Hall
4. Overcoming Imposter Syndrome and Building Confidence	Juliana Nogueira	C201
7. Manuscript Preparation and Submission Strategies	PAGES IPO	C401
8. Community Engagement and Indigenous Perspectives in Paleoenvironmental Research	Andriantsilavo Razafimanantsoa	C301
9. The Future of Research: What do you need? What do you expect from PAGES?	Shiling Yang	C401

14:00-15:00

Topic	Moderators	Venue
1. Navigating Interdisciplinary Research Challenges	Asfawossen Asrat Kassaye	Poster Hall
2. Mentorship and Networking Opportunities	Christine Omuombo	C201
3. Exploring Opportunities: Funding Strategies and Career Advancement in Paleoenvironmental Research	Xu Zhang and Yassine Ait-Brahim	Poster Hall
3. Exploring Opportunities: Funding Strategies and Career Advancement in Paleoenvironmental Research	Eugenia Ferrero	C301
4. Overcoming Imposter Syndrome and Building Confidence	Juliana Nogueira	C201
7. Manuscript Preparation and Submission Strategies	PAGES IPO	C401
8. Community Engagement and Indigenous Perspectives in Paleoenvironmental Research	Andriantsilavo Razafimanantsoa	C301
9. The Future of Research: What do you need? What do you expect from PAGES?	Shiling Yang	C401

BREAKOUT GROUPS

Tue. 20 May

# 5 Appendices

## 5.1 Code of Conduct

The Past Global Changes (PAGES) 2025 Open Science Meeting (OSM) and associated Young Scientists Meeting (YSM) will be a welcoming, respectful, inclusive and collaborative event. Robust dialogue and exchange of ideas are encouraged, whilst being mindful of others.

PAGES OSM and YSM 2025 are committed to advancing acceptance, accessibility, justice, equity, diversity, and inclusion across all its activities. PAGES OSM and YSM 2025 do not tolerate discrimination or harassment of any kind, including sexual or non-sexual harassment, bullying, intimidation, abuse of authority, violence, threats of violence, retaliation, or other disruptive behavior.

Any participant who is aware of disrespectful treatment, harassment, bullying or discrimination, regardless of whether it rises to the level of breach of this conduct, should immediately notify anyone from the Local Organizing Committee, either by contacting them on site or by emailing them. All reports and allegations will be handled sensitively and in confidence. Our immediate priority will be to protect the privacy of the person(s) involved and the need for further action will be assessed carefully on a case-by-case basis.

### **Behavior expected of all meeting participants**

- Treat everyone with respect.
- Respect your fellow participants by using good practice for intercultural collaborations.
- Be mindful of your surroundings and of your

fellow participants.

- Provide your true professional identity, affiliation, and contact information whenever requested.
- No copying, taking photos or making recordings of any scientific material shown in any type of presentation, unless the presenter explicitly authorizes it.
- Respect the rules and policies of the meeting venue, hotels, online platform, or any other venue.
- Be accountable: When we, as organizers or participants, fail to meet these guidelines, work together to identify problems and adjust policy and practice together.

Last Updated: March 2025

---

Access PAGES' Code of Conduct here: <https://pastglobalchanges.org/about/code-of-conduct>.

## 5.2 Gender Equity and Diversity Statement

### PAGES OSM and YSM 2025

Past Global Changes (PAGES) seeks to promote the involvement of all scientists worldwide, in particular early-career researchers (ECRs) and scientists from low- and middle-income countries. PAGES facilitates activities that address past changes in the Earth system in order to improve projections of future climate and environment, and inform strategies for sustainability. The 2025 Open Science Meeting (OSM) and associated Young Scientists Meeting (YSM) aim to promote interdisciplinary scientific exchange and international cooperation in past global change research, and to contribute to all aspects of past changes in key components of the Earth's surface system (air, water, ice, land, life, society, etc.) across timescales.

PAGES OSM and YSM 2025 are committed to ensuring broad representation in all their objectives, and to be a beacon for best practice in gender equity, diversity and inclusiveness in membership, activities, events, programs, and services.

Broader aspects of diversity include (but are not limited to) race, religion, geographic

location, disability, gender identity and sexual orientation. We aim to provide a safe, respectful, and harassment-free conference environment for everyone involved, regardless of age, sex, gender, gender identity and expression, sexual orientation, (dis)ability, physical appearance, race, ethnicity, nationality, marital status, military status, veteran status, religious beliefs, dietary requirements, childbirth- and pregnancy-related (medical) conditions or childcare requirements.

PAGES OSM and YSM 2025 acknowledges that gender equity is a key factor in achieving excellence in paleoscience research. Achieving gender equity and diversity requires active input from individuals to support, embrace, and speak out about barriers. We encourage all participants, to help us achieve our gender equity and diversity goals in all your duties and activities, and in accordance with your position.

Last updated: March 2025



## 5.3 Picture Permission Policy

### PAGES OSM and YSM 2025

To ensure the privacy, intellectual property rights, and professional integrity of all participants, the following picture permission policy applies to the PAGES 2025 OSM and YSM, held in Shanghai, China.

#### **Photography and Recording**

Photography, audio recording, and video recording of presentations, posters, and discussions are strictly prohibited without the explicit permission of the presenter and the conference organizers.

Attendees may take general photos of the conference venue and networking sessions unless otherwise restricted by the organizers.

#### **Media and Press**

Accredited media representatives must obtain prior approval from the conference organizers before capturing any photos, videos, or interviews.

Any images or recordings intended for publication or distribution must be reviewed and approved by the conference organizers and relevant speakers.

#### **Social Media Sharing**

Participants are encouraged to share their conference experience on social media but

must respect the privacy of fellow attendees.

Any shared images must not include identifiable content from presentations or posters without the presenter's consent.

#### **Use of Conference Photos**

The conference organizers may take official photographs and recordings for promotional and archival purposes.

By attending the conference, participants grant permission for their image to be used in official conference materials unless they opt out by notifying the organizers in advance.

#### **Enforcement and Violations**

Any violation of this policy may result in removal from the conference and potential exclusion from future events.

Concerns or disputes regarding photography and recording should be reported to the conference organizers immediately.

We appreciate your cooperation in creating a respectful and professional environment for all attendees. If you have any questions about this policy, please contact the conference organizers.

Last updated: March 2025

## 5.4 List of Breakout Group Participants

**Monday, 13:00-14:00**

### 1. Navigating Interdisciplinary

#### Research Challenges -

##### Asfawossen Asrat

- Yanning Ou
- Yanjie Zhao
- Benjamin Gwineth
- Deepak Jha
- Jeanne Millot-Weil
- Niklaus Bartlome
- Hana Camelia
- Antao Xu
- Lin Jiajian
- Xiaofang Huang

### 2. Mentorship and Networking

#### Opportunities - Keely Mills

- Xiaowen Quan
- Sudhira Ranjan Bhadra
- Giulia Molina
- Anna Schultze
- Yu Ting Yan
- Ruoxin Li
- Robin Crucitti-Thoo
- Kanon Kino
- Sarah Jackson
- Asmae Baqloul

### 2. Mentorship and Networking

#### Opportunities - Christine

##### Omuombo

- Christian Wirths
- Jian Wang
- Glory Oden

- James O'Neill
- Avirajsinh Jadav
- Khalil Azennoud
- Philbert Katto
- Kelsey Murphy

### 3. Exploring Opportunities:

#### Funding Strategies and

#### Career Advancement in

#### Paleoenvironmental Research -

##### Eugenia Ferrero

- Yunfan Chen
- Anna Kicsi
- Donghao Li
- Ana Alves
- Amanda Gerotto
- Sreevidya Edayilam
- Florencia Agliano
- Lisa Feist
- Yizet Huaman Navarro
- Mary Grace Albright

### 5. Adapting to Remote

#### and Collaborative Work

#### Environments - Andriantsilavo

##### Razafimanantsoa

- Yanxuan Du
- Mohd Salman
- Fetra Randriatsara
- Anson Cheung
- Denis Petrov
- Markus Grimmer
- Agustín Bellusci

### 6. The Scientific Publication.

#### What is its Future and how did

#### it all start? - Haowen Dang and Juliana Nogueira

- Richard Warren
- Fernanda Oliveira Matos
- Verena Meier
- Mingyang Yu
- Xiaowen Niu
- Sérgio Gonçalves Jr.
- Ze Zhang
- Christian Zagaceta
- Coralie Zorzi
- Thomas Kenji Akabane

### 7. Manuscript Preparation and

#### Submission Strategies - PAGES

##### IPO

- Yawen Shang
- Nele Vollmar
- Jingyu Liu
- Siyao Yu
- Shouyi Huang
- Rahul Pawar
- Thena Thulasi Doss
- Yang Yu
- Shane Lusk

### 9. The Future of Research. What do you need? What do you expect from PAGES? - Shiling Yang

- Erika Rodrigues
- Monica Castaño
- Yuanyu Cheng
- Bohao Dong
- Margot Schneider

- Le Kang
- Fangyuan Lin
- Romina Achaga
- Raúl Trejos Tamayo

**Monday, 15:00-16:00**

**1. Navigating Interdisciplinary Research Challenges -**

**Asfawossen Asrat**

- Yawen Shang
- Rahul Pawar
- Margot Schneider
- Le Kang
- Romina Achaga
- Richard Warren
- Christian Zagaceta
- Christian Wirths
- Fetra Randriatsaa
- Agustín Bellusci

**2. Mentorship and Networking Opportunities - Christine**

**Omuombo**

- Lin Jiajian
- Yang Yu
- Monica Castaño
- Yuanyu Cheng
- Yunfan Chen
- Florencia Agliano
- Thomas Kenji Akabane
- Yanxuan Du
- Mohd Salman

**3. Exploring Opportunities: Funding Strategies and Career Advancement in Paleoenvironmental Research - Eugenia Ferrero**

- Benjamin Gwinneth
- Antao Xu

- Giulia Molina
- Anna Schultze
- Nele Vollmar
- Shouyi Huang
- Erika Rodrigues
- Xiaowen Niu
- Avirajsinh Jadav
- Markus Grimmer

**4. Overcoming Imposter Syndrome and Building Confidence - Juliana Nogueira**

- Yanning Ou
- Xiaowen Quan
- Sudhira Ranjan Bhadra
- Kanon Kino
- Thena Thulasi Doss
- Anna Kicsi
- Anson Cheung

**6. The Scientific Publication. What is its Future and how did it all start? - Haowen Dang**

- Yanjie Zhao
- Niklaus Bartlome
- Siyao Yu
- Fangyuan Lin
- Raúl Trejos Tamayo
- Donghao Li
- Jian Wang

**7. Manuscript Preparation and Submission Strategies - PAGES IPO**

- Hana Camelia
- Yu Ting Yan
- Bohao Dong
- Ana Alves
- Amanda Gerotto
- Sreevidya Edayilam
- Mingyang Yu
- Ze Zhang

- Glory Oden
- James O'Neill
- Denis Petrov

**9. The Future of Research. What do you need? What do you expect from PAGES? - Shiling Yang**

- Deepak Jha
- Xiaofang Huang
- Robin Crucitti-Thoo
- Asmae Baqloul
- Lisa Feist
- Verena Meier
- Coralie Zorzi
- Khalil Azennoud
- Philbert Katto

**10. Promoting Diversity and Inclusion - Keely Mills**

- Jeanne Millot-Weil
- Ruoxin Li
- Sarah Jackson
- Jingyu Liu
- Shane Lusk
- Yizet Huaman Navarro
- Mary Grace Albright
- Fernanda Oliveira Matos
- Sérgio Gonçalves Jr.
- Kelsey Murphy

**Tuesday, 11:00-12:00**

**1. Navigating Interdisciplinary Research Challenges -**

**Asfawossen Asrat**

- Monica Castaño
- Yuanyu Cheng
- Yunfan Chen
- Sreevidya Edayilam
- Shouyi Huang



- Erika Rodrigues
- Xiaowen Quan
- Sudhira Ranjan Bhadra
- Anna Kicsi

## **2. Mentorship and Networking Opportunities - Christine Omuombo**

- Margot Schneider
- Richard Warren
- Fetra Randriatsara
- Hana Camelia
- Bohao Dong
- Antao Xu

## **3. Exploring Opportunities: Funding Strategies and Career Advancement in Paleoenvironmental Research - Eugenia Ferrero**

- Le Kang
- Yu Ting Yan
- Mingyang Yu
- Denis Petrov
- Verena Meier
- Jian Wang
- Thena Thulasi Doss
- Anson Cheung
- Jeanne Millot-Weil
- Jingyu Liu
- Fernanda Oliveira Matos

## **3. Exploring Opportunities: Funding Strategies and Career Advancement in Paleoenvironmental Research - Xu Zhang and Yassine**

- Yawen Shang
- Christian Zagaceta
- Christian Wirths
- Agustín Bellusci

- Lin Jiajian
- Ze Zhang
- Robin Crucitti-Thoo
- Philbert Katto
- Fangyuan Lin
- Raúl Trejos Tamayo

## **4. Overcoming Imposter Syndrome and Building Confidence - Juliana Nogueira**

- Rahul Pawar
- Ana Alves
- James O'Neill
- Asmae Baqloul
- Khalil Azennoud
- Nele Vollmar
- Niklaus Bartlome
- Ruoxin Li
- Sérgio Gonçalves Jr.

## **7. Manuscript Preparation and Submission Strategies - PAGES IPO**

- Yanxuan Du
- Coralie Zorzi
- Giulia Molina
- Anna Schultze
- Avirajsinh Jadav
- Markus Grimmer
- Donghao Li
- Yizet Huaman Navarro
- Mary Grace Albright
- Kelsey Murphy

## **8. Community Engagement and Indigenous Perspectives in Paleoenvironmental Research - Andriantsilavo Razafimanantsoa**

- Romina Achaga
- Mohd Salman
- Glory Oden
- Deepak Jha

- Xiaofang Huang
- Lisa Feist
- Benjamin Gwineth
- Sarah Jackson
- Shane Lusk

## **9. The Future of Research. What do you need? What do you expect from PAGES? - Shiling Yang**

- Yang Yu
- Florencia Agliano
- Thomas Kenji Akabane
- Amanda Gerotto
- Xiaowen Niu
- Yanjie Zhao
- Siyao Yu
- Yanning Ou
- Kanon Kino

**Tuesday, 14:00-15:00**

## **1. Navigating Interdisciplinary Research Challenges - Asfawossen Asrat**

- Yanxuan Du
- Florencia Agliano
- Amanda Gerotto
- Lisa Feist
- Ana Alves
- Yu Ting Yan
- Denis Petrov
- Jian Wang
- Anson Cheung

## **2. Mentorship and Networking Opportunities - Christine Omuombo**

- Sreevidya Edayilam
- Shouyi Huang
- Markus Grimmer
- Donghao Li

- Yanjie Zhao
- Yanning Ou
- Fangyuan Lin
- Nele Vollmar
- Fernanda Oliveira Matos

**3. Exploring Opportunities: Funding Strategies and Career Advancement in Paleoenvironmental Research - Eugenia Ferrero**

- Hana Camelia
- Coralie Zorzi
- Yang Yu
- Thomas Kenji Akabane
- Siyao Yu
- Mohd Salman
- Deepak Jha
- Xiaofang Huang
- Sarah Jackson
- Asmae Baqloul
- Khalil Azennoud

**3. Exploring Opportunities: Funding Strategies and Career Advancement in Paleoenvironmental Research - Keely Mills**

- Monica Castaño
- Yuanyu Cheng
- Xiaowen Quan
- Fetra Randriatsara
- Romina Achaga
- Glory Oden
- Rahul Pawar
- James O'Neill

**4. Overcoming Imposter Syndrome and Building Confidence - Juliana Nogueira**

- Margot Schneider

- Giulia Molina
- Anna Schultze
- Mary Grace Albright
- Kelsey Murphy
- Xiaowen Niu
- Yawen Shang
- Robin Crucitti-Thoo
- Jeanne Millot-Weil
- Jingyu Liu

**7. Manuscript Preparation and Submission Strategies - PAGES IPO**

- Anna Kicsi
- Philbert Katto
- Raúl Trejos Tamayo
- Niklaus Bartlome
- Ruoxin Li
- Sérgio Gonçalves Jr.
- Le Kang

**8. Community Engagement and Indigenous Perspectives in Paleoenvironmental Research - Andriantsilavo Razafimanantsoa**

- Yunfan Chen
- Erika Rodrigues
- Richard Warren
- Bohao Dong
- Antao Xu
- Kanon Kino
- Lin Jiajian
- Ze Zhang
- Verena Meier
- Thena Thulasi Doss

**9. The Future of Research. What do you need? What do you expect from PAGES? - Shiling Yang**

- Sudhira Ranjan Bhadra
- Avirajsinh Jadav
- Yizet

- Huaman Navarro
- Christian Zagaceta
- Christian Wirths
- Agustín Bellusci
- Benjamin Gwinneth
- Shane Lusk
- Mingyang Yu



## 6 Contact Us

**Secretary General | Shouting Tuo**

State Key Laboratory of Marine Geology  
Tongji University

**ADD.** 1239 Siping Road, Shanghai, China

**Tel.** +86-21-65982198, +86-13601872997

**Email** [pages2025@tongji.edu.cn](mailto:pages2025@tongji.edu.cn)

**Registration | Baiyi Pan**

**Tel.** +86-21-65981389, +86-18817759791

**Logistics Support | Zhaocy Zhang**

**Tel.** +86-21-65985090, +86-18817759802

**Scientific Program | Yangyang Li**

**Tel.** +86-21-65983441, +86-18810404284

**On-site Support | Yuanshan Chen**

**Tel.** +86-21-65982056, +86-13916480610

**Exhibition | Tingyu Wen**

**Tel.** +86-21-65985022, +86-13817664860

**Transport | Xiaofeng Gao**

**Tel.** +86-21-65981613, +86-15021055616





# PAGES 2025

7th OPEN SCIENCE MEETING  
5th YOUNG SCIENTISTS MEETING

WEBSITE



WECHAT



---

Local Organizing Committee  
**State Key Laboratory of  
Marine Geology, Tongji University**

Add. 1239 Siping Road,  
Shanghai 200092, China

Email [pages2025@tongji.edu.cn](mailto:pages2025@tongji.edu.cn)